

Specifications

Celeron J1900

	TWINPOS G5200Ui	TWINPOS G5200Vi	
CPU	Celeron J1900 (Up to 2.42 GHz)		
Main memory	1st slot : DDR3L 2GB/4GB 2nd slot : Additional DDR3L 2GB/4GB (Optional)		
Storage	x1 HDD (500GB); x1 Additional SSD (Optional)		
Operating Systems Preinstalled	Windows® Embedded POSReady7 (32bit) / Windows® 10 IoT Enterprise 2015 LTSB for Retail or Thin Client (32/64bit)		
Operating Systems Supported (for TWINPOS G5200 w/o OS)	Windows® 7 Professional (32bit) / Windows® 10 IoT Enterprise 2015 LTSB for Retail or Thin Client (32/64bit)		
Fanless	Yes		
I/O Panel			
USB	x6 (USB2.0) [x1 for 2nd Display or VFD]		
Powered USB	x1 12V, x1 24V		
COM	x2 (RJ45)		
Powered COM	x2 (D-Sub 9pin, male)		
LAN	x1 (10/100/1000BASE-T)		
Video out	x1 DVI [for 2nd Display]		
Cash Drawer	x1 (RJ11)		
DC out	x1 5V/12V [for 2nd Display]		
Audio	Line-in/out, Mic/Speaker		
Operator Display	15" XGA TFT LCD w/ Resistive Touchscreen		
Customer Display (Optional)	15" XGA TFT LCD for TWINPOS G5200Ui (w/ Resistive Touchscreen) or 2 x 20 Alphanumeric VFD (mounted on the base unit of TWINPOS G5200Ui or stand-alone)	15" XGA TFT LCD for TWINPOS G5200Vi (w/ Resistive Touchscreen) or 2 x 20 Alphanumeric VFD (Stand-alone)	
MSR (Optional)	ISO Track 1/2/3		
UPS (Optional)	Yes	No	
Base Unit	Base Unit for TWINPOS G5200Ui	Base Unit for TWINPOS G5200Vi	
Weight (w/o peripherals)	kg	9	5
	lbs	20	11
Dimensions (W x D x H, w/o peripherals)	mm	357 x 282 x 329	357 x 80 x 301
	in	14 x 11 x 13	14 x 3 x 12
Power Supply	Power Supply Unit	AC Adaptor	
Color	Black / White		

Specifications and designs are subject to change without prior notice. NEC shall not be responsible for technical or editorial errors.

Celeron G1820TE/ Core i3-4330TE/ Core i5-4570TE Processor

	TWINPOS G5200Ui	TWINPOS G5200Vi	TWINPOS G5200Ei
CPU	Celeron G1820TE (2.2 GHz) / Core i3-4330TE (2.4 GHz) / Core i5-4570TE (2.7 GHz)		
Main memory	1st slot: DDR3L 2GB/4GB 2nd slot: Additional (w/o Touch or w/ Resistive Touchscreen) 2GB/4GB (Optional)		
Storage	x1 HDD (500GB); x1 Additional HDD (500GB)/x1 SSD (Optional, Software RAID Support)		
Operating Systems Preinstalled	Windows® Embedded POSReady7 (32bit) / Windows® 10 IoT Enterprise 2015 LTSB for Retail or Thin Client (32/64bit)		
Operating Systems Supported (for TWINPOS G5200 w/o OS)	Windows® 7 Professional (32 bit) / Windows® 10 IoT Enterprise 2015 LTSB for Retail or Thin Client (32/64bit)		
Fanless	No		
I/O Panel			
USB	x4 (USB2.0); x2 (USB3.0) [x1 for 2nd Display or VFD]		
Powered USB	x1 12V, x1 24V		
COM	x2 (RJ45)		
Powered COM	x2 (D-Sub 9pin, male)		
LAN	x1 (10/100/1000BASE-T)		
Video out	x1 DVI [for 2nd Display]; x1 DisplayPort		
Cash Drawer	x1 (RJ11)		
DC out	x1 5V/12V [for 2nd Display]		
Audio	Line-in/out, Mic/Speaker		
Operator Display	15" XGA TFT LCD w/ Resistive Touchscreen		
Customer Display (Optional)	15" XGA TFT LCD for TWINPOS G5200Ui (w/ Resistive Touchscreen) or 2 x 20 Alphanumeric VFD (mounted on the base unit of TWINPOS G5200Ui or stand-alone)	15" XGA TFT LCD for TWINPOS G5200Vi (w/ Resistive Touchscreen) or 2 x 20 Alphanumeric VFD (Stand-alone)	2 x 20 Alphanumeric VFD (Stand-alone)
MSR (Optional)	ISO Track 1/2/3		
UPS (Optional)	Yes	No	
Base Unit	Base Unit for TWINPOS G5200Ui	Base Unit for TWINPOS G5200Vi	Base Unit for TWINPOS G5200Ei
Weight (w/o peripherals)	kg	9	5
	lbs	20	11
Dimensions (W x D x H, w/o peripherals)	mm	357 x 282 x 329	357 x 80 x 301
	in	14 x 11 x 13	14 x 3 x 12
Power Supply	Power Supply Unit	AC Adaptor	
Color	Black / White		

Why NEC?

NEC Corporation is a leader in the integration of IT and network technologies that benefit businesses and people around the world. By providing a combination of products and solutions that cross utilize the company's experience and global resources, NEC's advanced technologies meet the complex and ever-changing needs of its customers. NEC brings more than 115 years of expertise in technological innovation to empower people, businesses and society.



Corporate Headquarters (Japan)

NEC Corporation  
www.nec.com

Configurable Touchscreen POS

TWINPOS G5200



# Configurable Touchscreen POS

NEC has successfully demonstrated its capability to support non-stop store operations through its total retail solutions for more than twenty years.

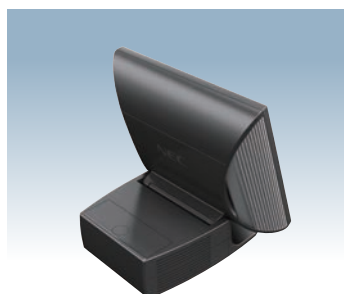
The new TWINPOS G5200 series provides an extensive lineup of standard, pole-mount, wall-mount, and low-profile models, enabling flexible installation in a variety of store layouts. In addition, the use of a flat display avoids ingress of water drops and dust from the front of the display. Moreover, the new series offers easy maintenance of key components such as the HDD (Hard Disk Drive), RAM (Random Access Memory), and power supply unit.

## Flexible Style

### 3 Installation Choices for Various Store Formats

#### TWINPOS G5200Ui – Standard

The standard configuration fits into a wide variety of industry segments.



#### TWINPOS G5200Vi – VESA Compliant Pole/Wall Mount

Vertical space optimization helps create more horizontal counter space for displaying promotional items or POPs, leading to better customer service.



#### TWINPOS G5200Ei – Flat & Compact

An open space between customers and staff can facilitate better communication.



## Stylish Design

### Enhancing Store Ambience



### White Color Option



#### Long-lasting White

The white housing material with the UV absorbent keeps the white color longer by preventing a yellowish tint.

## Reliability

### Built-in UPS

- TWINPOS G5200Ui comes with an option of built-in UPS installed in the base unit to ensure continuous operation during momentary power failure.
- It initiates soft-shutdown after power failure.

### Fan-less Operation

- A low heat generating Celeron J1900 CPU enables fan-less operation.
- The fan-less operation is especially suitable for environments with dust or oil usage, as well as for noise-sensitive places such as upscale stores or restaurants.

### Solid State Drive (SSD)

- TWINPOS G5200 series offers a reliable and long-life SSD.

### Flat Display

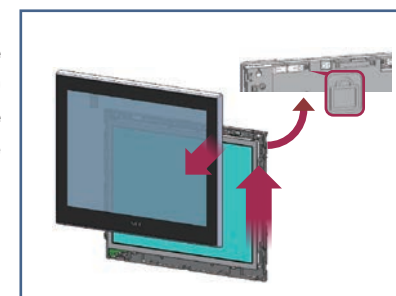
- The flat surface of display is easy to wipe and keeps out dust and spill.



## Maintainability

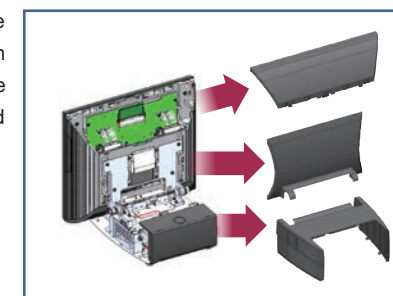
### Touchscreen

Touchscreen replacement can be a pain point for maintenance staff. For the TWINPOS G5200 series, the touchscreen can be removed by simply sliding the bars.



### Screw-less Covers for Easy Access to Main Parts

Screw-less covers enable instant access to parts with comparatively higher failure rates – the HDD, RAM and power supply unit.



## Platforms

### Enterprise CPUs

TWINPOS G5200 offers a wide range of enterprise CPU options. The enterprise CPUs have a longer supply period and are more reliable than consumer CPUs.

- Core i5-4570TE (2.7 GHz)
- Core i3-4330TE (2.4 GHz)
- Celeron G1820TE (2.2 GHz)
- Celeron J1900\* (Up to 2.42 GHz)

\*Low Power Consumption

### Operating Systems

"Windows® 10 IoT Enterprise 2015 LTSC for Retail or Thin Client" and "Windows® Embedded POSReady7" are available.

